

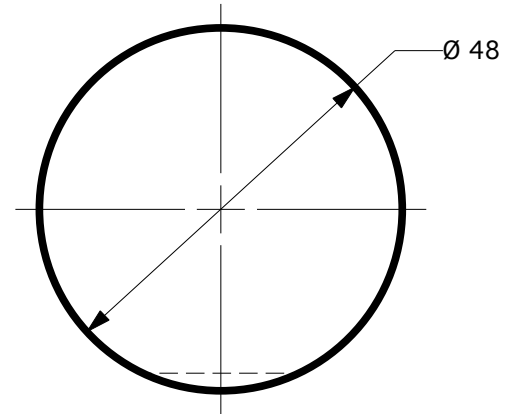
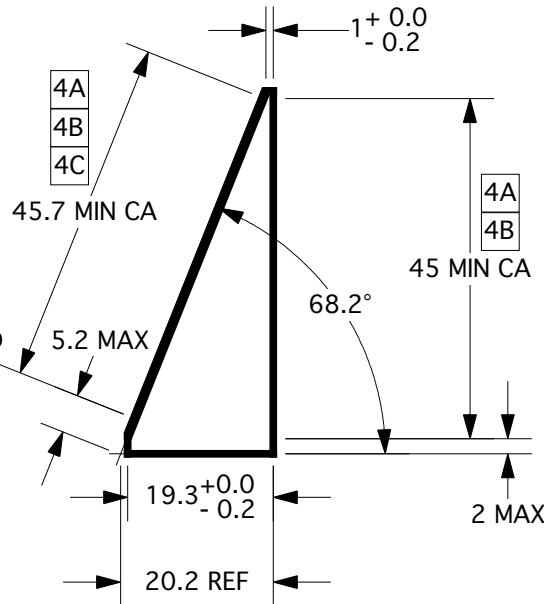
NOTES:

1. MATERIAL: PER TABLE A PER PURCHASE ORDER.
2. STRIAE GRADE A, PER MIL-G-174B.
3. BIREFRINGENCE ≤ 10 NM/CM.
4. WITHIN CLEAR APERTURE:
 - A. SURFACE FLATNESS: 633 NM PEAK-TO-VALLEY OVER ENTIRE CLEAR APERTURE.
 - B. SURFACE QUALITY: SCRATCH 60, DIG 40, PER MIL-O-13830.
 - C. APPLY ANTI-REFLECTION COATING PER PURCHASE ORDER.
5. BREAK ALL SHARP EDGES 0.50 ± 0.25 . EDGE CHIPS NOT TO EXCEED 0.50 IN ANY PLANE.
6. EDGES: 220 GRIT OR EQUIVALENT.

TABLE A

PER MIL-G-174B, OPTICAL GLASS

MATERIAL ID	TYPE
BSL7Y	TYPE 517-642 (BSL7Y), UV ENHANCED TRANSMISSION, CLASS 1, GRADE A, FINE ANNEALED, INCLUSION NO.30, PACKING LEVEL C.
BSL7 (BK7)	TYPE 517-642 (BSL7/BK7), CLASS 1, GRADE A, FINE ANNEALED, INCLUSION NO.30, PACKING LEVEL C.
FUSED SILICA	CORNING 7980 Of UV GRADE FUSED SILICA OR EQUIVALENT.
NSF66	SCHOTT N-SF66 CLASS 1, GRADE A, FINE ANNEALED, INCLUSION NO.30, PACKING LEVEL C.



REVISIONS				
ZONE	REV	DESCRIPTION	DATE	APPROVED

QTY RECD	DESCRIPTION	CODE IDENT	PART OR IDENTIFYING NO.	ITEM
PARTS LIST				

<p>PROPRIETARY NOTICE</p> <p>THIS DOCUMENT CONTAINS PROPRIETARY INFORMATION AND SUCH INFORMATION MAY NOT BE DISCLOSED TO OTHERS FOR ANY PURPOSE OR USED FOR MANUFACTURING PURPOSES WITHOUT WRITTEN PERMISSION FROM KAISER OPTICAL SYSTEMS, INC.</p>												
<p>DASH NO.</p>	<p>NEXT ASSY</p>	<p>USED ON</p>	<p>APPLICATION</p>	<p>UNLESS OTHERWISE SPECIFIED INTERPRET THIS DRAWING PER DOD-STD-100</p> <p>PARTS TO BE FREE OF BURRS AND SHARP EDGES</p> <p>SOLDER PER MIL-STD-454, REOT 5</p> <p>COMMERCIAL TOLERANCES APPLY TO STOCK SIZES</p> <p>WORKMANSHIP PER MIL-STD-454, REOT 9</p> <p>IDENTIFYING NUMBERS SHOWN IN PARENTHESIS FOR REFERENCE ONLY</p> <p>DIMENSIONAL LIMITS APPLY AFTER FINISH PROCESSING</p>	<p>UNLESS OTHERWISE SPECIFIED DIMENSIONS ARE IN MILLIMETERS</p> <p>TOLERANCES: SURFACE TEXTURE:</p> <p>.XX ± 0.05</p> <p>.XXX \pm</p> <p>ANGLES $\pm 0.05^\circ$</p> <p>MATERIAL:</p> <p>FINISH:</p>	<p>CONTRACT NO.</p> <p>DWN J. ARNS</p> <p>10/16/2007</p> <p>CHK</p> <p>MECH</p> <p>ELEC</p> <p>OPTICAL</p> <p>APVD CUSTOMER</p>	<p>QA</p> <p>MFG</p> <p>RELBL</p> <p>PROJ ENG</p> <p>PROJ MGR</p>	<p>KAISER OPTICAL SYSTEMS, INC.</p> <p>A ROCKWELL COLLINS COMPANY</p> <p>ANN ARBOR, MICHIGAN 48106</p> <p>TITLE</p> <p>PRISM, VPH-PP-1070-656</p>	<p>SIZE</p> <p>A</p> <p>SCALE 1:1</p>	<p>FSCM NO.</p> <p>WT</p>	<p>DWG NO.</p> <p>UNRELEASED</p>	<p>REV</p> <p>X</p>
<p>SHEET 1 OF 1</p>												