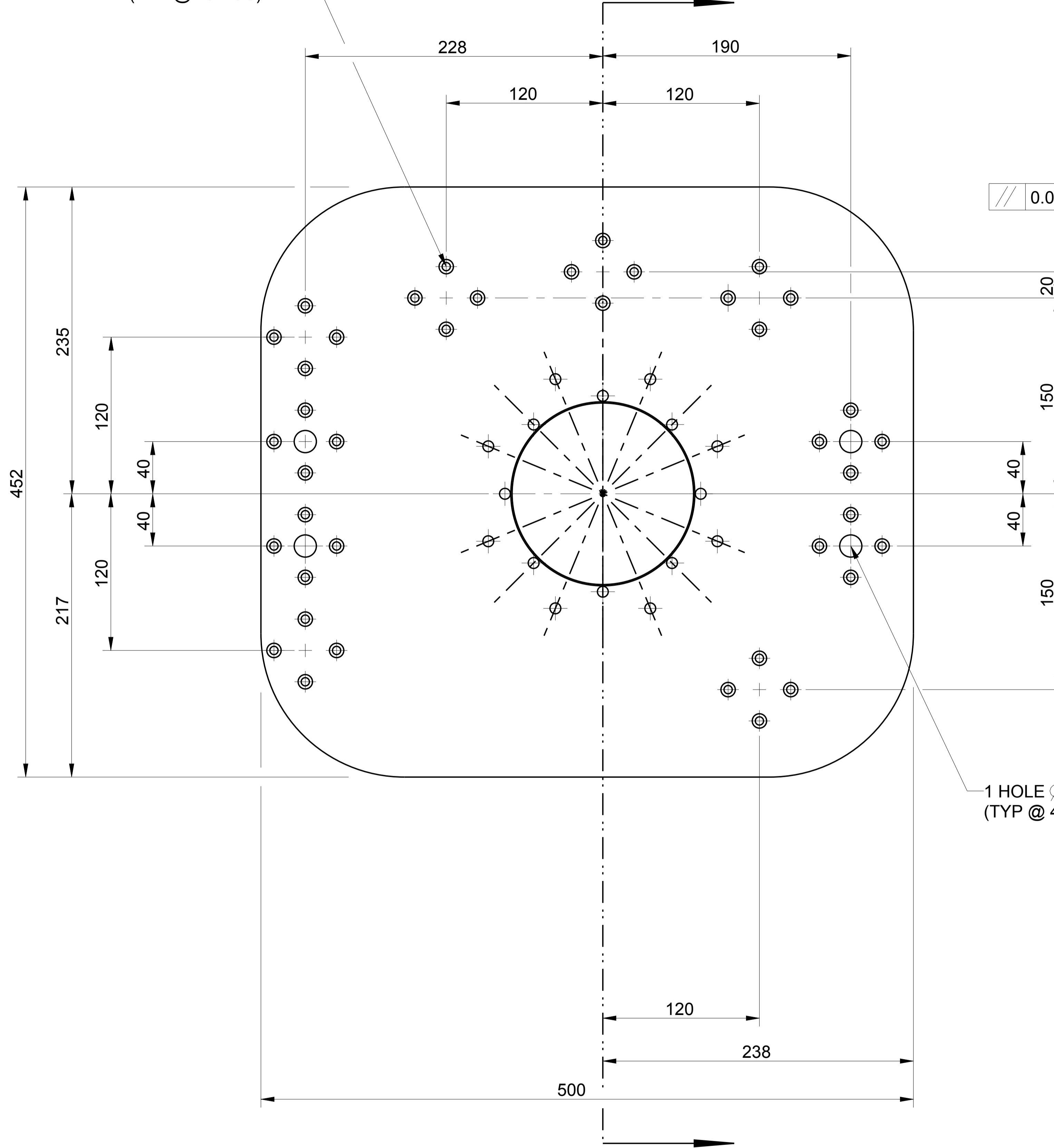
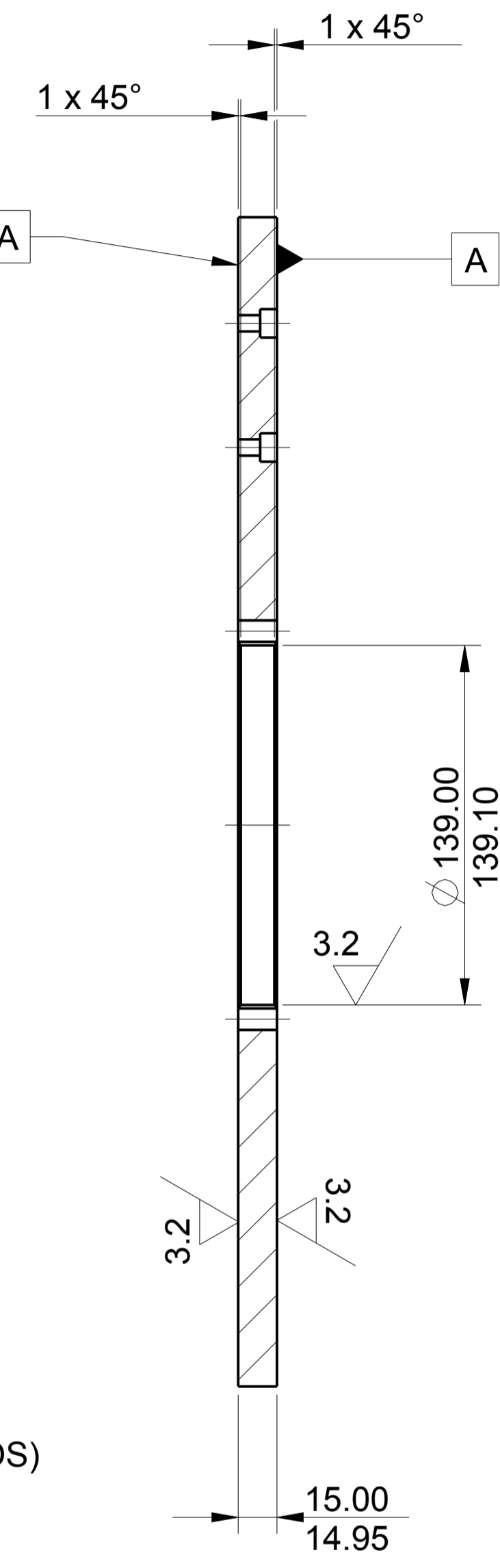


4 HOLES  $\phi$  6.3  
C/BORE  $\phi$  11 x 6.5 DEEP  
EQUI-SPACED ON 48 PCD  
(TYP @ 10 POS)



0.02 A

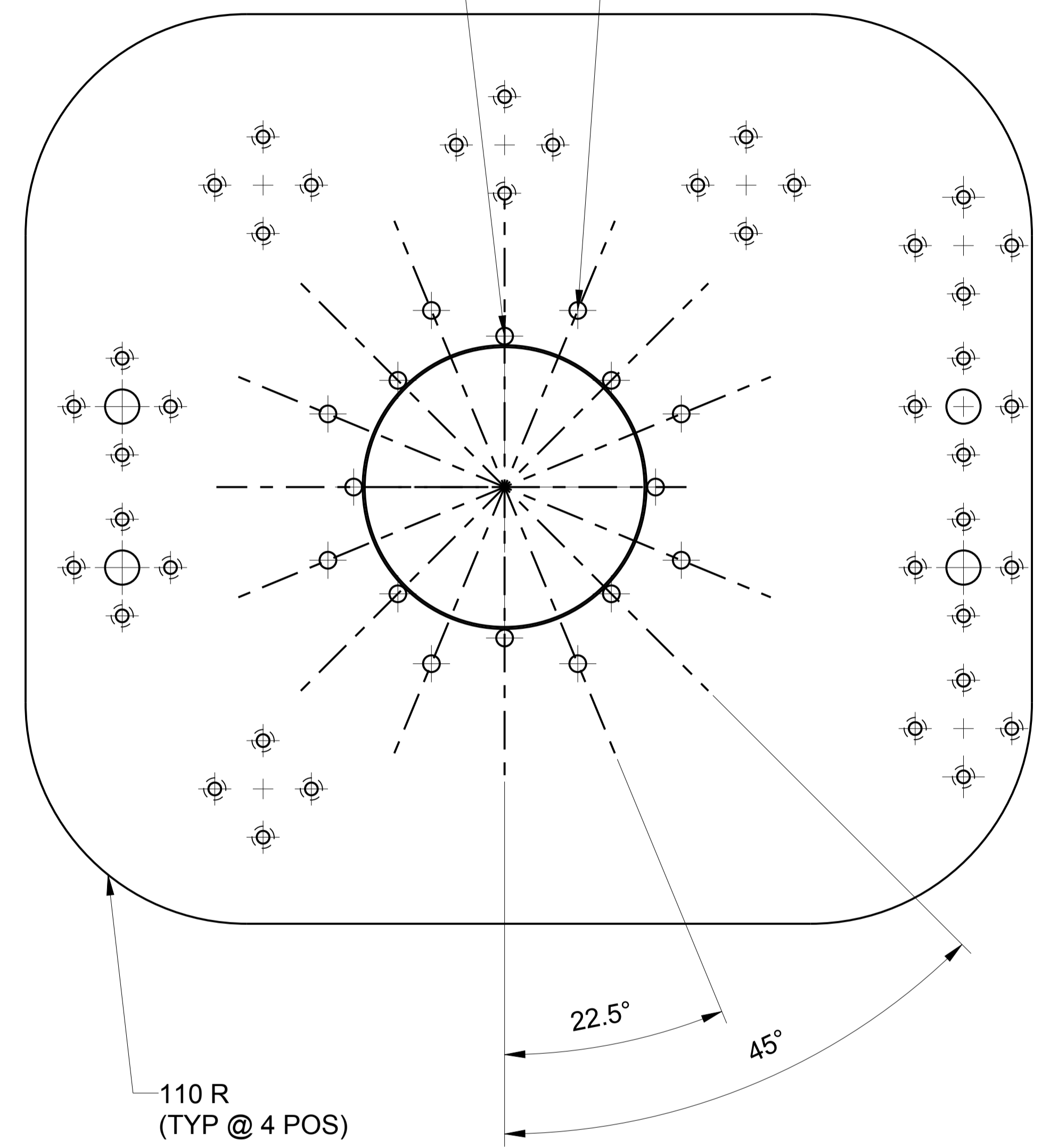
1 HOLE  $\phi$  17  
(TYP @ 4 POS)



A-A

8 HOLES  $\phi$  8.3  
EQUI-SPACED ON 150 PCD

8 HOLES  $\phi$  8.3  
EQUI-SPACED ON 190 PCD



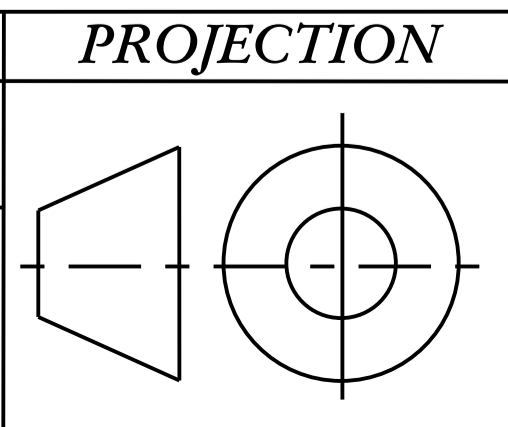
A

CONFORMS TO BS 8888	ITEM	REQD	DESCRIPTION	MATERIAL	
	A	1	CRYOSTAT BASE PLATE	ALUMINIUM GRADE 6061	
SCALE	DRAWN	DATE	CHECKED	APPROVED	ASSEMBLY
1:0.5	T.G	31/08/12			COMPONENTS #
DESCRIPTION					
AREA THAI NATIONAL TELESCOPE "THAILAND"					
DETAILS OF CRYOSTAT BASE PLATE					
THIS DRAWING IS STRICTLY CONFIDENTIAL. NOT FOR THIRD PARTY DISTRIBUTION.					
DRAWING NUMBER					REV
ULT-SPEC-017					A

**DO NOT SCALE**  
**PROJECTION**

EXPLANATION OF NOTES,  
SYMBOLS, DIMS: SEE BS 8888

GENERAL NOTES  
DIMENSIONS mm  
REMOVE ALL BURRS AND SHARP CORNERS  
MAXIMUM CHAMFER 0.5 U.S.O  
LINEAR DIMENSIONS +/- 0.1 U.S.O  
ANGULAR DIMENSIONS +/- 0' 30" U.S.O  
SURFACES 3.2  $\mu$ m U.S.O



A

