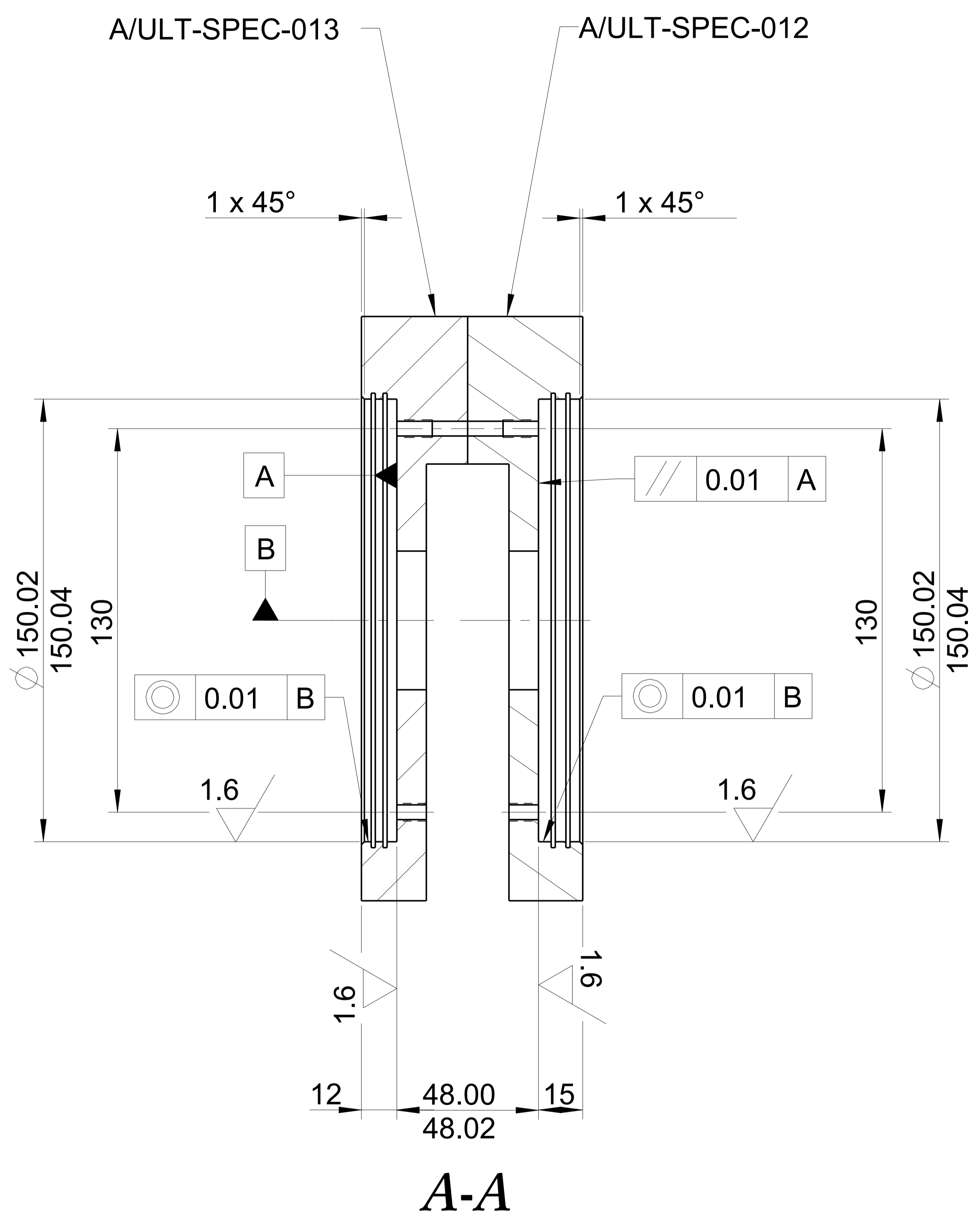


DIMENSION TO ACHIEVE CLOSE SLIDING FIT OVER LENS
 BARREL 3's NOMINAL ϕ 150 FLANGE (MAX CLEARANCE 0.05)
 SEE DRAWING No ULT-SPEC-008



DIMENSION TO ACHIEVE CLOSE SLIDING FIT OVER LENS
 BARREL 2's NOMINAL ϕ 150 FLANGE (MAX CLEARANCE 0.05)
 SEE DRAWING No ULT-SPEC-007

NOTE!
 ACHIEVE DIMENSIONS AFTER ASSEMBLY.
 THIS DRAWING TO BE READ IN CONJUNCTION WITH DRAWINGS
 ULT-SPEC-012 (U-BLOCK:CAMERA SIDE)
 ULT-SPEC-013 (U-BLOCK:TELESCOPE SIDE)

DO NOT SCALE		PROJECTION	
EXPLANATION OF NOTES, SYMBOLS, DIMS: SEE BS 8888			
<small>GENERAL NOTES DIMENSIONS mm REMOVE ALL BURRS AND SHARP CORNERS MAXIMUM CHAMFER 0.5 U.S.O LINEAR DIMENSIONS +/- 0.1 U.S.O ANGULAR DIMENSIONS +/- 0' 30" U.S.O SURFACES 3.2 μm U.S.O</small>			

CONFORMS TO BS 8888		ITEM	REQD	DESCRIPTION	MATERIAL
SCALE	DRAWN	DATE	CHECKED	APPROVED	ASSEMBLY #
1:1	T.G	02/08/12			COMPONENTS
AREA		THAI NATIONAL TELESCOPE "THAILAND"			
DESCRIPTION		ASSEMBLY MACHINING DETAILS FOR THE U-BLOCK (CAMERA SIDE AND TELESCOPE SIDE)			
THIS DRAWING IS STRICTLY CONFIDENTIAL. NOT FOR THIRD PARTY DISTRIBUTION.					
DRAWING NUMBER					REV
ULT-SPEC-014					A

