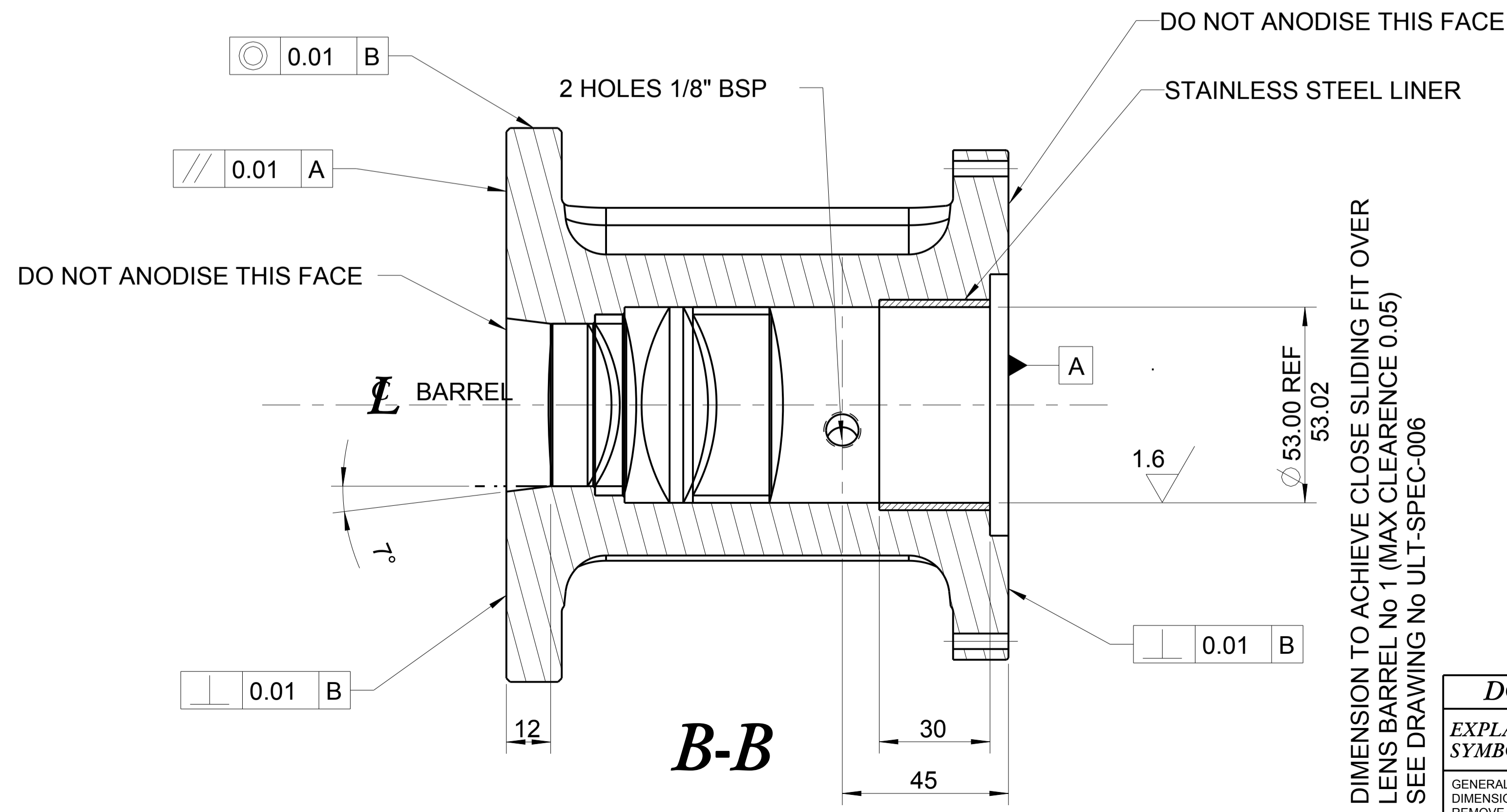
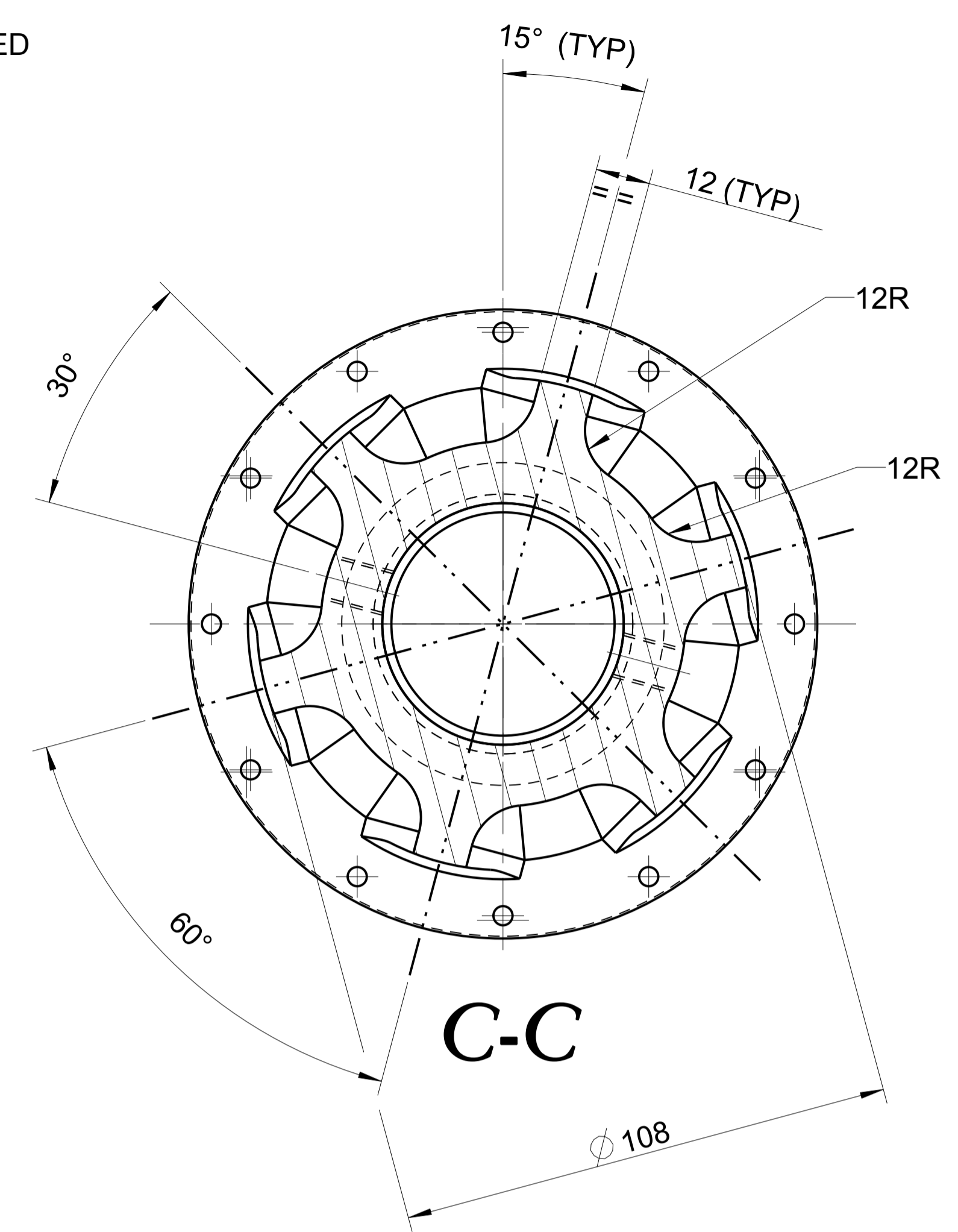
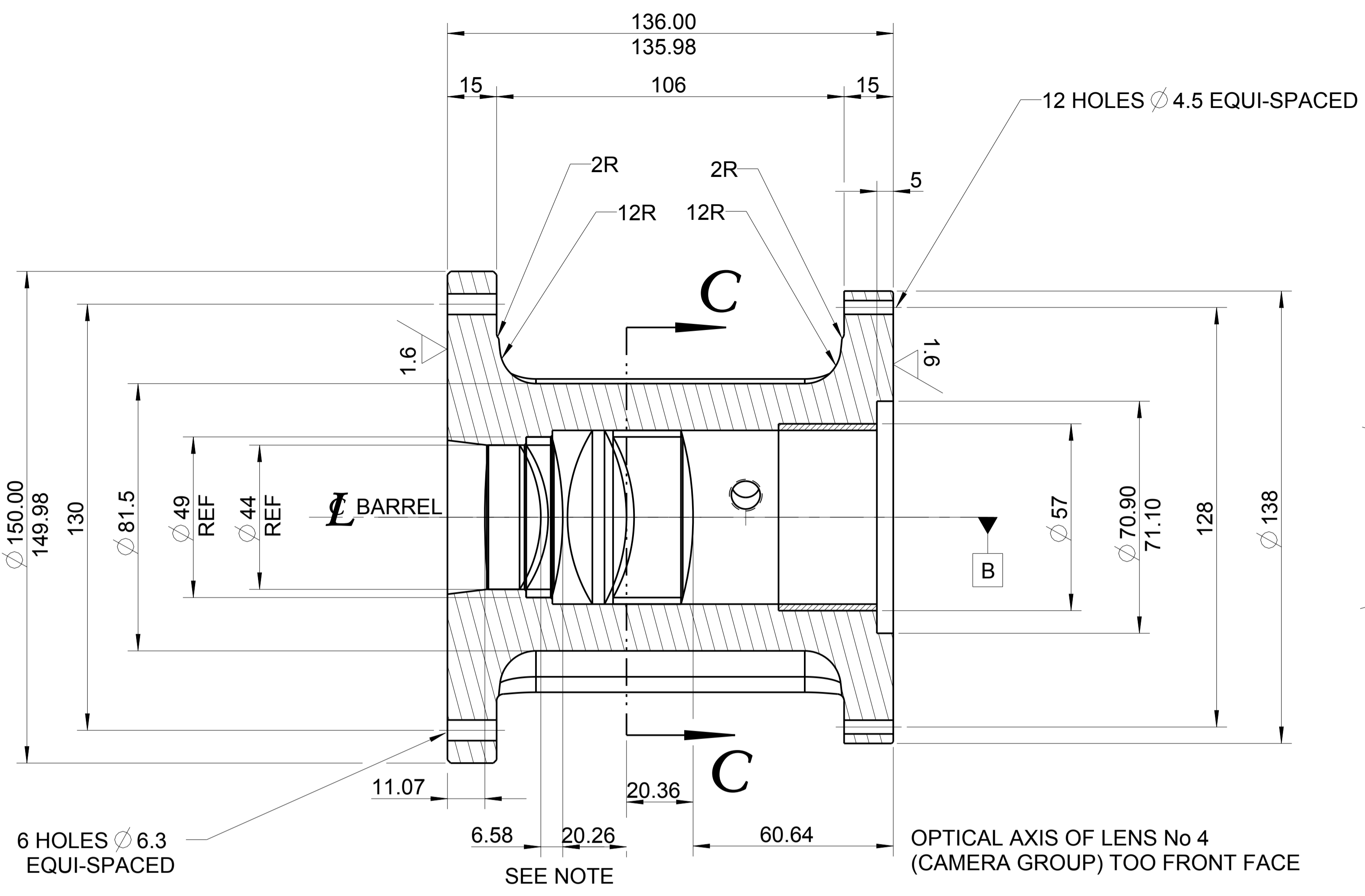


DIMENSION TO ACHIEVE CLOSE SLIDING FIT INSIDE ALIGNMENT BLOCK RECESS (MAX CLEARANCE 0.05) SEE DRAWING No ULT-SPEC-009



DIMENSION TO ACHIEVE CLOSE SLIDING FIT OVER LENS BARREL No 1 (MAX CLEARANCE 0.05) SEE DRAWING No ULT-SPEC-006

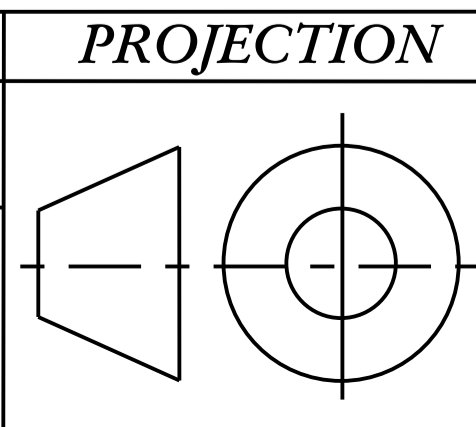
NOTE!
DIMENSIONS FOR LENS SEPERATIONS ARE FROM THEIR CORRESPONDING OPTICAL AXES. SEE TULLY PEACOCK DOCUMENT DATED (22/01/13) OPTIMISED THICKNESSES

A

B	1	ANODISE MATT BLACK	AS REQUIRED
A	1	LENS BARREL No 2	ALUMINIUM GRADE 6061

SCALE	DRAWN	DATE	CHECKED	APPROVED	ASSEMBLY
1:1/3:1	T.G	03/05/12			COMPONENTS #

DO NOT SCALE
EXPLANATION OF NOTES, SYMBOLS, DIMS: SEE BS 8888
GENERAL NOTES
DIMENSIONS mm
REMOVE ALL BURRS AND SHARP CORNERS
MAXIMUM CHAMFER 0.5 U.S.O
LINEAR DIMENSIONS +/- 0.1 U.S.O
ANGULAR DIMENSIONS +/- 0.30° U.S.O
SURFACES 3.2 μ m U.S.O



CONFORMS TO BS 8888		ITEM REQD DESCRIPTION MATERIAL		
AREA THAI NATIONAL TELESCOPE "THAILAND"				
DESCRIPTION DETAILS OF LENS BARREL No 2 "CAMERA GROUP"				
THIS DRAWING IS STRICTLY CONFIDENTIAL. NOT FOR THIRD PARTY DISTRIBUTION.				
DRAWING NUMBER		ULT-SPEC-007		REV D

