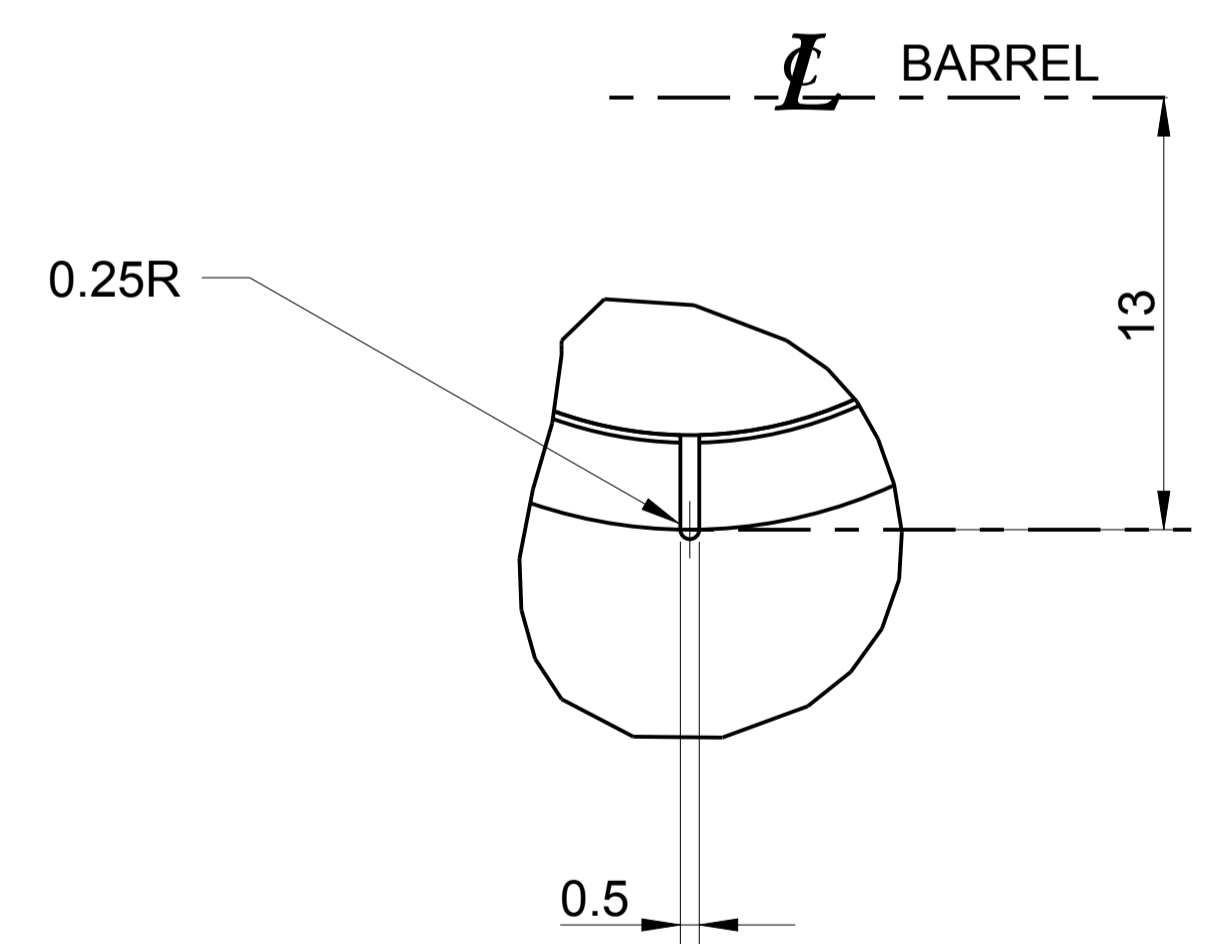
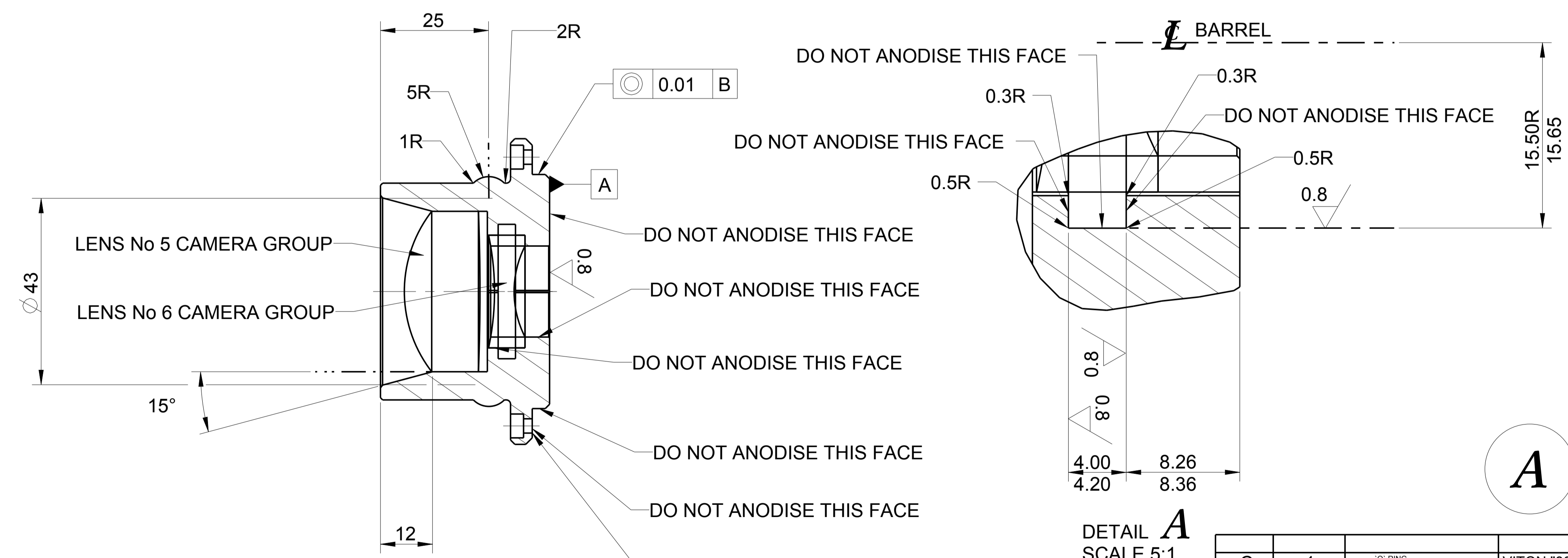


A-A



DETAIL **B**
SCALE 5:1



DETAIL **A**
SCALE 5:1

NOTE!
DIMENSIONS FOR LENS SEPERATIONS ARE FROM
THEIR CORRESPONDING OPTICAL AXES.
SEE TULLY PEACOCK DOCUMENT:
DATED (22/01/13) OPTIMISED THICKNESSES

B-B

C	1	O' RING O/D 31mm x 3mm CIS	VITON "80 SHORE"
B	1	ANODISE MATT BLACK	AS REQUIRED
A	1	LENS BARREL 1	ALUMINIUM GRADE 6061

DO NOT SCALE		PROJECTION		2:1 / 5:1		T.G		02/05/12		COMPONENTS #	
EXPLANATION OF NOTES, SYMBOLS, DIMS: SEE BS 8888				AREA				THAI NATIONAL TELESCOPE "THAILAND"			
GENERAL NOTES DIMENSIONS mm REMOVE ALL BURRS AND SHARP CORNERS MAXIMUM CHAMFER 0.5 U.S.O LINEAR DIMENSIONS +/- 0.1 U.S.O ANGULAR DIMENSIONS +/- 0' 30" U.S.O SURFACES 3.2 μ m U.S.O				DESCRIPTION				DETAILS OF LENS BARREL 1 "CAMERA GROUP"			
THIS DRAWING IS STRICTLY CONFIDENTIAL, NOT FOR THIRD PARTY DISTRIBUTION.											
DRAWING NUMBER										ULT-SPEC-006	
REV C											

