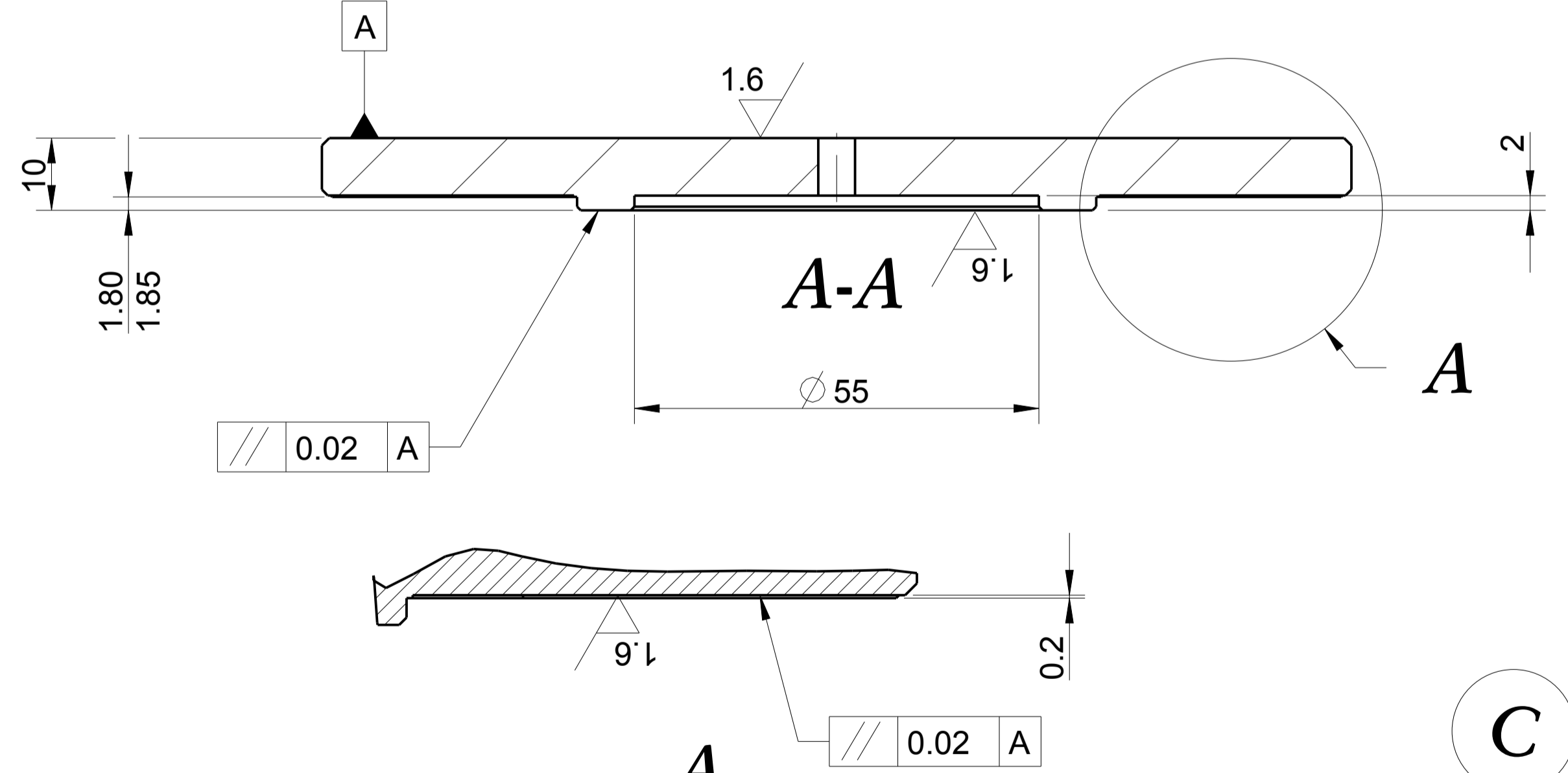
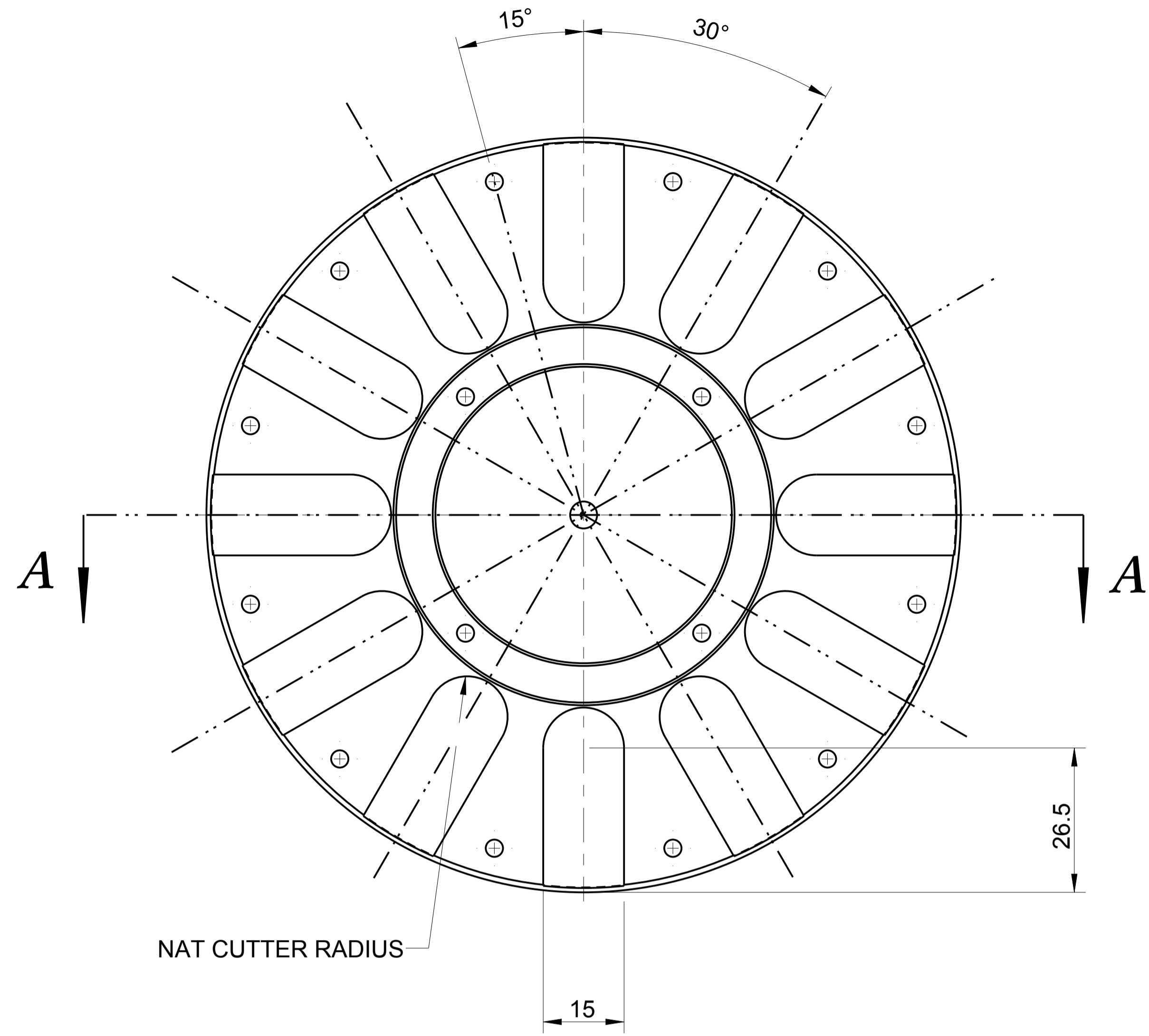


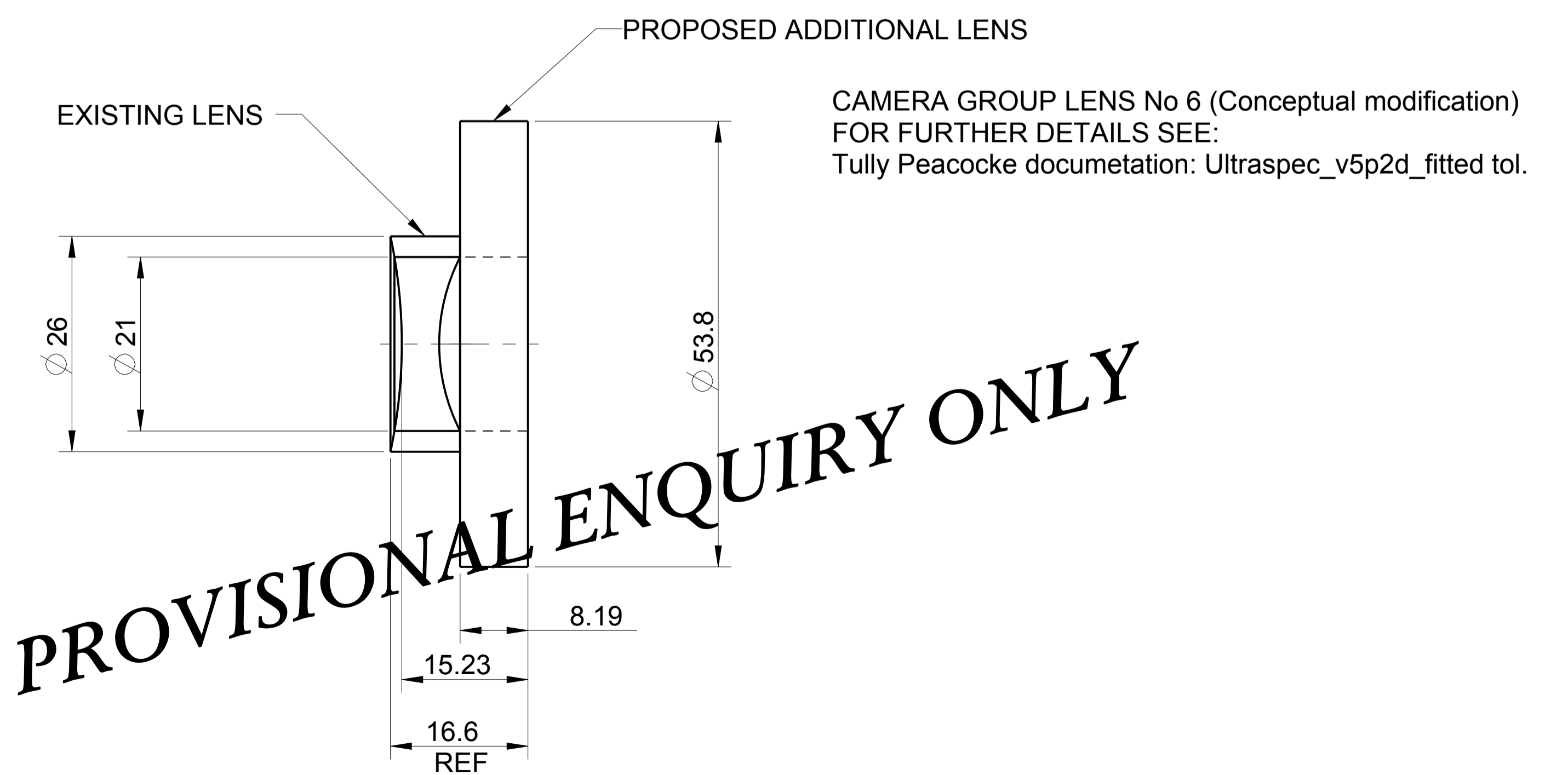
**A**



DETAIL A  
SCALE 3:1

**C**

**NOTE!**  
FOR OMITTED DIMENSIONS  
SEE ITEM A ON DRG ULT-SPEC-003



**PROVISIONAL ENQUIRY ONLY**

CAMERA GROUP LENS No 6 (Conceptual modification)  
FOR FURTHER DETAILS SEE:  
Tully Peacocke documetation: Ultraspec\_v5p2d\_fitted tol.

**B**

<b>DO NOT SCALE</b>		<b>PROJECTION</b>	
EXPLANATION OF NOTES, SYMBOLS, DIMS: SEE BS 8888			
GENERAL NOTES DIMENSIONS mm REMOVE ALL BURRS AND SHARP CORNERS MAXIMUM CHAMFER 0.5 U.S.O LINEAR DIMENSIONS +/- 0.1 U.S.O ANGULAR DIMENSIONS +/- 0° 30' U.S.O SURFACES 3.2 <i>typ</i> U.S.O			

CONFORMS TO BS 8888	ITEM	REQD	DESCRIPTION	MATERIAL
	C	1	CRYOSTAT PARALLELISM TEST ANULUS	ALUMINIUM Gr 6061
	B	1	LENS No 6 (PROPOSED MODIFICATIONS)	
	A	1	CRYOSTAT TEST BOSS	ALUMINIUM Gr 6061
SCALE	DRAWN	DATE	CHECKED	APPROVED
1:1.5	T.G	20/03/12		
SHEFFIELD UNIVERSITY				
DESCRIPTION CRYOSTAT TEST BOSS & LENS No 6 (CAMERA GROUP) PROVISIONAL ENQUIRY				
THIS DRAWING IS STRICTLY CONFIDENTIAL, NOT FOR THIRD PARTY DISTRIBUTION.				
DRAWING NUMBER				REV
ULT-SPEC-003				A

